



TS - 2916 (Analog)



FEATURES

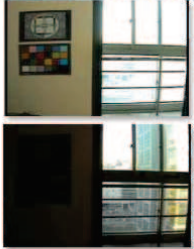
- 1/3" Sony EX-view 960H CCD (EFFIO-P)
- 700TV Lines
- 2D & 3D Noise Reduction
- Waterproof
- Day/Night
- True WDR
- 40 IR LED
- 12VDC/24VAC Dual Voltage

SPECIFICATIONS

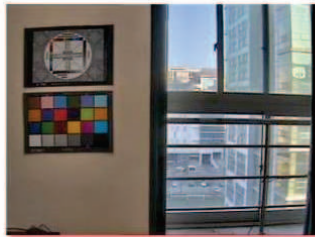
Image Sensor	1/3" Sony EX-view 960H
Number of Pixels	976 x 494
Horizontal Resolution	700 TV lines
Minimum Illumination	0 Lux
Video Output	1.0 Vp-p @75 Ohms
Sync System	Internal
S/N Ratio	52 dB typical
Gain Control	28dB Max
Shutter	1/60 - 1/100,000
White Balance	ATW/AWB/Manual
Backlight Compensation	Built-in, Center weighted
Gamma	0.45
Lens Type	3.5 - 16mm
Input Voltage	12 VDC, 24 VAC
Power Consumption	6 watt w/IR [.833 A, .417 A]
Weight	2.97 lbs
Dimensions	4.25" x 3.55" x 10.9"
Temperature	-4°F - 122°F
Rating	IP68
Day/Night	Yes
IR view distance	50ft
IRs	40 LED

SONY EFFIO-P WDR SOLUTIONS 960H, CRYSTAL CLEAR 700TVL

CONVENTIONAL
TOO BRIGHT OUTSIDE & TOO DARK INSIDE

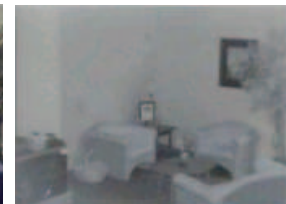
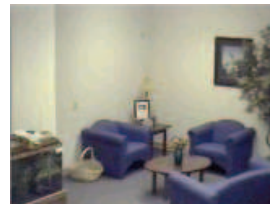


SONY EFFIO-P WDR
PERFECT PICTURE FOR BOTH BRIGHT AND DARK AREA



Color by day

B&W by night



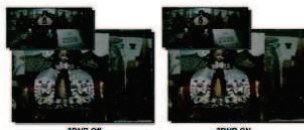
Ultraclear Resolution 700TVL
Delivers the crystal clear images that accurately capture every aspect of any scene.



CONVENTIONAL

EFFIO-P

2D & 3DNR
Space and time-based Noise Reduction.



3DNR OFF

3DNR ON